



3911919-693600
 Duke University
 Duke Lemur Center
 3705 Erwin Road
 Durham, NC 27705



DUKE
 LEMUR CENTER

David Haring, Editor & Photographer • Design by Hilliker Designs. This publication was printed using 100% pcw recycled paper, processed chlorine free and with soy ink.

DLC STATEMENT OF OPERATIONS JULY 1, 2013-JUNE 30, 2014

Statement of Operations July 2013 - June 2014

REVENUE	
Annual University Allocation	\$ 1,096,754
Other University Support (including Facilities)	\$ 640,700
Endowment Income	\$ 148,210
*Annual Giving (donations)	\$ 465,547
Tours, Education & Merchandising	\$ 426,953
Research & Research Cabin Fees	\$ 52,822
Grants	
Government	\$ 415,336
Foundations	\$ 48,763
Other	\$ 61,571
Reserve from prior year	\$ 1,434,509
Total Income	\$ 4,791,165

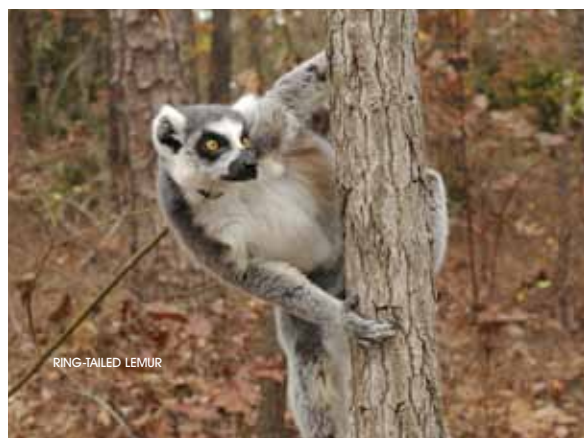
EXPENSES	
Salary & Fringes (all staff)	2,022,150
University Facilities (building & utilities)	540,700
General/Administrative Operations	165,213
Animal Care & Operations	
Animal Department	68,350
Veterinary Department	32,173
Curator	7,422
Student/Animal Training	5,238
DLC Facilities	18,016
Research Department	6,414
Development & Public Relations	45,811
Education & Merchandising	103,905
SAVA Conservation Programs	117,544
Other Research	86,858
Undergraduate Research Awards	2,636
Equipment/Acquisitions	58,858
Capital/Renovation Projects	176,481
Reserve for future programming	1,333,396
Total Expense	4,791,165

*includes foundations, alumni, non-alumni, industry, & other donations non grant including specific purpose donations.

DLC RESEARCH BY THE NUMBERS

July 1, 2013-June 30, 2014

	# researchers	# projects
Faculty/Professional/PostDoc PIs	31	34
Graduate Student PIs	24	21
Undergraduate Student PIs	14	14
University classes (n=9)	123	unk
High School Student PIs	1	1
Research Assistants	24	-
DLC Research Interns	17	14
DLC Work Study Students	5	1
TOTAL	239	85



RING-TAILED LEMUR

ANNUAL REPORT OCTOBER 2014

DISCOVER | PROTECT | ENGAGE

lemur.duke.edu

RED-RUFFED LEMUR

A BANNER YEAR AT THE DLC

BY ANNE YODER, DIRECTOR



2014 has been a banner year at the DLC. Indeed, it is hard to believe that so much can have happened in such a short period! As you will learn when you read through this Annual Report, the DLC is a literally buzzing with activity.

On site, great strides are being made in our training program, our volunteers are proving invaluable in keeping the place functioning at levels that we could never achieve without the extra hands, and even school children are doing their part to help the Center preserve and protect lemurs. On a more global level, our resident paleontologist and Director of the Fossil Division, continues to roam the world in search of remarkable new fossil discoveries; and, importantly, we are now engaged in a truly global effort to save lemurs thanks to a new partnership with aye-aye breeding programs in Japan and Europe.

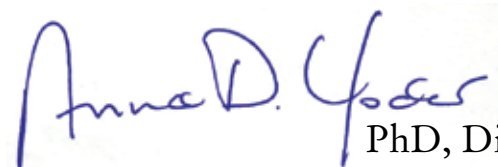
After more than 48 years, our exhaustive veterinary and life history records for each and every lemur to live or have lived at the DLC are available on-line. This is an achievement that I never thought could become a reality. I cannot stress enough just how monumental of an accomplishment this is. Previously, our records were scattered all over the place, and in virtually every format that you can imagine, from excel spreadsheets (the best case scenario), to hard drives, to floppy disks, to paper records. Indeed, I first came to understand the magnitude of the problem when Dr. Bobby Schopler came rushing into my office, several years ago, in desperate search of a “floppy disk”. I assumed that he meant the more modern (though still long-outdated) 3.5-inch “hard” floppy. But no, he meant an actual 8-inch soft floppy disk, the kind in use in the 1980’s! I was both astonished and disconcerted, though he assured me that this was at least better than paper records, a point on which I had to agree. But now, we have finally joined the digital age, and from the comfort of your living room couch (or wherever else you like to surf the web), you can find out everything an inquiring mind would want to know about the personal lives of every lemur to have lived at the DLC --- though I hasten to add that we sincerely hope that these data will be of greatest interest to biologists who are interested in the causes and consequences of longevity, fecundity, and all of the other life-history features of primate life. The data doors are open; come on in world!

You can read all about the ups and downs of this monumental project in Data Czar, Dr. Sara Zehr’s, heartfelt tribute to Richard Roach, the long-term SAS specialist, who with his wife Freda Cameron, guided

us along the path to successful database development. Tragically, we lost Richard to cancer last spring, and we feel his absence every single day. We are grateful for the time that he shared with us, and also, to the many many friends who chose to honor him with their donations to the DLC. Richard Roach will live always in the hearts of the DLC staff, and in the future of the lemurs whose life stories he immortalized.

DLC involvement in Madagascar continues to strengthen and evolve. Our SAVA Initiative has really gotten its legs under it thanks in large part to a generous grant from the Helmsley Charitable Trust. The three-year grant will cover a variety of SAVA project expenses and will allow SAVA staff to move much quicker in achieving our ambitious conservation goals in Northeastern Madagascar. Stays tuned for updates, and expect to hear about exciting new developments in the SAVA project in the near future!

Finally, in another exciting development in Madagascar, the DLC is strengthening connections to Vahatra, a Malagasy NGO whose mission it is to promote Malagasy science by Malagasy scientists. Vahatra’s director, Dr. Achille Raselimanana, is someone whom I have known for years, and indeed, he was at one time a postdoc in my lab when I was on faculty at Yale. To now be forming connections between our two organizations is beyond satisfying --- it is a dream come true. It truly feels like the uniting of goals and ambitions that we have held dear for so many years; goals that have motivated and sustained us through many challenging times, both at the DLC and in Madagascar. And now, by combining our expertise and our passion for biodiversity science, the future looks bright and the possibilities open for conserving lemurs and other Malagasy biodiversity. We would never have arrived at this moment had it not been for the unwavering support of our devoted donors. So let me end by saying, “misaotra betsaka” --- Thank you very much!


PhD, Director

KIDS CAN MAKE A DIFFERENCE!

NIKI BARNETT, EDUCATION AND DEVELOPMENT PROGRAMS MANAGER

Now, more than ever, kids are supporting the Duke Lemur Center with both in-kind and monetary donations. Masses of school children arrive with enrichment items during their tours, hold bake sales at school, collect aluminum cans, and ask for donations for the lemurs in lieu of presents for their birthday. I am humbled by their generosity and inspired every day by their enthusiasm and spirit. I wanted to take a moment to say, “THANK YOU!” I realize it takes a village, so “THANK YOU,” to all of the parents and school teachers instilling the virtue of giving into our next generation as well. Kids can make a difference, and I see it every day!



VOLUNTEER SPOTLIGHT

LAUREN HAGEDORN



Position at the DLC: Technician Assistant and Animal Husbandry Intern (Summer 2014)

How long have you been volunteering? 1 year

Why do you volunteer at the DLC? I LOVE the DLC!!! Volunteering at the Lemur Center brings me so much joy it’s ridiculous! The lemurs are spectacular – so fascinating, fun, and funny! – and the staff is incredible!! They inspire me to no end with their passion, wisdom, creativity, and thoughtfulness. Each time I volunteer, I am in awe at how lucky I am to have such an extraordinary place just a hop, skip, and a jump from where I’m studying! For a crazy lemur-lover like me, the DLC is paradise.

What do you do outside of the DLC?

I enjoy life as a Blue Devil at Duke University, pursuing my passion for psychology, sustainability and conservation, photography, and documentary studies! Some of my favorite activities (aside from volunteering at the DLC, of course!) include having oodles of fun with Special Olympics, training with Club Triathlon, taking pictures for Duke Nutrition and Health Services, Club Running, and Honor Council, engaging people, exploring Durham, and taking advantage of every opportunity to learn something new!

Favorite Species: Varecia rubra (red-ruffed lemur). Special shout-out to Cordelia, Avior, Puck, Carme, Titan, Hunter, and Pyxis!

NEARLY 50 YEARS OF LEMUR DATA NOW AVAILABLE ONLINE

BY ROBIN SMITH, SCIENCE WRITER



A 48-year archive of life history data for the world's largest and most diverse collection of endangered primates is now digital and available online. The Duke Lemur Center database allows visitors to view and download data for more than 3600 animals representing 27 species of lemurs, lorises and galagos — distant primate cousins who predate monkeys and apes — with more data to be uploaded in the future.

Staff at the center observe and record virtually every aspect of an animal's life from cradle to grave. For each animal they know when it was born, who its parents were, how fast it grew, what it ate, which animals it mated with, how many offspring it had, and when and why it died.

Hiddleston is one of them. Hiddleston is a blue-eyed black lemur, which makes him one of the 25 most endangered primates in the world. Since he was born in March 2013, staff at the Duke Lemur Center have catalogued minute details of his life in their daily logbooks. They know how big he was at birth and when he tried his first solid foods. They monitor his weight and note how he interacts. They even tracked his first attempts to climb a tree. Hiddleston isn't alone. When Research Scientist Sarah Zehr first arrived at the Duke Lemur Center in 2007, she found a treasure trove of data about the lives, health and habits of more than 4000 animals, dating from the center's beginnings in 1966.

The fact that lemurs are at risk of dying out makes it unlikely that a collection of similar size will ever be recreated, Zehr said. "Many of these species are critically endangered in the wild, so they're unlikely to be held in captivity again. This means that the data are irreproducible." Getting at this one-of-a-kind

data, however, was a difficult task. Much of the data were locked up in handwritten notebooks or typed paper records. "The downside of the paper records is they're vulnerable, they're not digitized, and we only have a single copy — so they're impossible to analyze," Zehr said. The center migrated to electronic records in the 1990s, but that still left much of the data buried in odd computer files or hard-to-use databases. That began to change in 2012, when Zehr and software developers Freda Cameron and the late Richard Roach, formerly of SAS, started working on a project to assemble the information from the various source files and convert it into a single, easily searchable format.

It took them three years to compile and digitize the data and put it online. Visitors to the new database will find birth and death dates for each animal, IDs and ages for its parents, any litter mates or siblings, lifelong weight records, breeding season, gestation length and number of offspring — much of which would be difficult if not impossible to collect at a similar level of detail for lemurs living in the wild. Users can also find out whether any biological samples are available for an animal.

The database will also allow generations of future researchers to tackle a wide range of questions. Researchers studying aging and longevity, for example, will be able to compare maximum lifespans in captivity for different primate species, and pinpoint cellular and molecular traits that distinguish long-lived primates from short-lived ones.

The project was supported by the National Evolutionary Synthesis Center and the National Science Foundation (DB 1258440). Additional support was provided by the Duke Lemur Center and Duke's Natural Sciences Division. Visit <http://lemur.duke.edu/duke-lemur-center-database> to check out the data for yourself!

TAP FORAGING IN JAPANESE

BY DAVID HARING, REGISTRAR/PHOTOGRAPHER

It was 4:30am late last August 26th, and the Lemur Center's Toyota Tundra slowly traveled down Lemur Lane on its way to Raleigh Durham Airport (RDU). The vehicle contained three very sleepy DLC staff and one extremely angry aye-aye. The staff members were myself (animal transporter extraordinaire) and Primate Technicians Julie McKinney and Jenna Templeton. The aye-aye was a four year old female named Styx, who had been seriously offended an hour earlier, when Julie and Jenna grabbed her from her cozy nest and put her into her transport crate, rudely interrupting her beauty sleep.

We were heading to the Fed Ex terminal at RDU, where a couple of hours later, the two techs and the still angry Styx boarded a massive cargo plane heading (after a brief eight hour layover in Memphis) to San Diego. Julie and Jenna boarded by conventional means, a set of stairs rolled into place, while the single medium sized plastic kennel, weighing about 22lbs containing Styx (the kennel was reinforced with an inner steel cage since any aye-aye worth her salt could chew through a flimsy plastic shell in a matter of minutes), was carefully placed in the center of a huge pallet, then slowly raised via a hydraulic lift, large enough to easily lift an elephant, upward to the cargo door and then into the belly of the plane.

In the late 1980s and early 1990s, the Lemur Center established one of the first captive breeding programs for aye-aye by importing eight wild caught animals from Madagascar. About the same time, captive colonies were being established in other parts of the globe. Aye-ayes were imported from Madagascar to Japan (where the current population is now ten animals) and to Europe, where 15 aye-aye live today. Thanks to the original eight wild caught founders brought to the Lemur Center (five of which are still



alive!), aye-aye breeding in North America has been by far the most successful of any region of the world. Those founders, and their offspring have been responsible for the births of 36 infants at the Lemur Center and at a handful of American zoos, and a remarkable 24 of those offspring are still alive. The total captive aye-aye population in our part of the globe, spread out among seven institutions (all descendants of the original eight founders) stands at 28 (13 males, 15 females), giving a total world population of 53 individuals (27 males, 26 females).

Thirteen hours after departing from RDU, the Fed Ex plane touched down in sunny San Diego, and Julie, Jenna and Styx (still furious!) were met by the very excited San Diego Zoo Curator of Primates, Dean Gibson. Dean was inflicted with a passion for all things aye-aye during her tenure as Assistant Director of the Lemur Center in the early 2000s, and had been trying to bring aye-ayes to San Diego for years. After clearing quarantine in late September, a month after arrival, Styx will be introduced to a male named Nirina to form a new breeding pair. Nirina arrived in San Diego from the Ueno Zoo in Tokyo, Japan a few weeks prior



Endangered Species of Wild Fauna and Flora) permit, which is a requirement for international transport of endangered animals between zoological institutions. It is a process that can take months or even years, and when natural disasters intervene, such as the Japanese earthquake and tsunami of 2012, which delayed Nirina's shipment to the US by months, even more challenges arise.

Despite the various hurdles, the long overdue exchange of captive bred aye-ayes and their much needed genetic diversity has begun to flow between Japan and Europe and the United States the past few years. It all started with the shipment of Hitchcock (born at the DLC in 2005) to the Ueno zoo in November 2011. Then, in August, 2014 Japan sent Nirina, to the San Diego. At the publication of this newsletter the infusion of fresh aye-aye genes to Europe continues to be a work in progress. Sabrina (born at the DLC in 2003 to Poe and Morticia) was shipped from the San Francisco Zoo to the Bristol zoo in the UK in July 2014, and two aye-aye from the Denver Zoo were also shipped to the UK just weeks ago on September 15th-Pan (born at Denver) to the Jersey Zoo, and the DLC born Salem (daughter of Ardrey, and the first aye-aye born to a mother herself born in captivity) to the London Zoo. Waiting in the wings are two additional aye-ayes at the San Francisco Zoo who will be Europe-bound in a few weeks.

More international shipments of aye-aye will follow in the years to come. Hopefully this will result in increased breeding in Europe and overall improved genetic health of the global population. Meanwhile, Styx is reported to be doing well as she nears the end of her quarantine period in San Diego. One can imagine her as a much happier animal than the furious aye-aye who left the Lemur Center nearly a month ago. It might be a bit far-fetched to think of Styx practicing on feeding with chopsticks (after all, aye-aye are born with a middle finger as close to a chopstick as anything existing in the animal kingdom), and dreaming of the exotic Japanese suitor who awaits her! But at the very least we can hope that Styx and Nirina are a compatible match, and that they will produce many infants in the decades to follow!

to Styx and had already cleared quarantine. The DLC has been sending aye-aye on breeding loans to other zoos in the U.S for a number of years (Merlin and Caliban were the first, travelling to the San Francisco Zoo in August 1997, followed by Salem and Ozony-Avelo to Denver in June 2008, and Medusa and Tolkien to the Philadelphia Zoo in July 2009, with the Cincinnati Zoo and the Henry Doorly zoo also receiving animals). But none of those transactions had the decidedly international flair of Styx's pairing with the Japanese born Nirina.

In 2013, the San Diego Zoo held the first international captive aye-aye management workshop. Analysis of the population revealed that without adding additional wild caught animals (which due to a variety of reasons, was never an option), the genetics of captive population would suffer unless unrelated animals were exchanged between the US, Europe and Japan. Because the Lemur Center had the most success breeding aye-aye, the meeting recommended the transfer of six animals from North America to Europe (three males, three females, all DLC stock), one male from North America to Japan, one male from Japan to North America and one female from Japan to Europe.

Due to the fact that all lemurs are endangered and receive the highest level of protection by the government agencies assigned to protect them, it is a long and arduous process to get a CITES (Convention on International Trade in

LEMUR TRAINING UPDATE

BY MEG DYE, BEHAVIORAL MANAGEMENT AND STUDENT PROJECT COORDINATOR

I have a poorly kept secret to share: I LOVE training! I love everything about our positive interactions with the animals as we teach them to cooperate in their health care, participate in research and amaze our guests during education tours. The only thing that can top my love of training is working with other people who share my enthusiasm for training. Fortunately for me, I work with just such a team, comprised of dedicated technicians who enjoy and understand the value of training in the overall care of the animals and the mission of the Duke Lemur Center (DLC).

At the beginning of the summer, the tech team initiated a new daily schedule which included dedicated time for animal training. Our primary goals were to re-establish behaviors with animals that had experienced a lapse in their training sessions, and to initiate training with animals that had not participated in the training program. One of our largest challenges came with our smallest lemur species, the mouse lemur. With lofty training goals such as voluntary scale (the animals hop onto a scale so they can be weighed), voluntary kennel, and participation in touch screen cognition trials, the challenge was to figure out how to get a family of four mouse lemurs to each stay still in front of their own technician. In addition, the technicians



needed a safe way to deliver reinforcement to those tiny mouths (filled with tiny but very sharp teeth!) without being bitten. After months of much, much patience, the technicians can now reinforce the mouse lemurs for coming to station, remaining in front of a technician and, in some cases, touching their nose to a Q-tip. What keeps a mouse lemur's attention and can be safely delivered to their mouths? Drops of dilute agave juice from a syringe.

Other training accomplishments this summer have included using voluntary kenneling to move animals from one location to another within DLC, voluntary collaring of a female sifaka, teaching a protected -contact blue-eyed black lemur to present its back, voluntary vaginal swabs from a female aye-aye to monitor estrus cycles, voluntary ID tail shaves with black and white ruffed lemurs and teaching ring-tail lemurs to participate in a suspensory locomotion research project. And this was just the first few months of training! Accomplishments such as these are the result of a team of technicians who work extremely hard each day to not only provide the best care for the lemurs but are committed to creating time each day to be leaders in lemur husbandry, research and education through the application of animal training.



VOLUNTEER SPOTLIGHT

MARK CHANDLER

Position at the DLC: Tour guide, painter

How long have you been volunteering? More than 10 years.

Why do you volunteer at the DLC? I have always been interested in animals and so when I learned of the Duke Lemur Center it seemed like a wonderful opportunity to see fascinating creatures every week. I also enjoy teaching and the lemur tours gives me a chance to talk with adults and children about nature.

What do you do outside of the DLC? I am a psychiatrist with specialty training in Child and Neuropsychiatry. My private practice is in Durham, just a few minutes from the Lemur Center. As a physician, I am very interested in Evolutionary Medicine and the cross-over between primate veterinary care and our understanding of diseases in humans.

Favorite Species: Do I have to choose? Aye-aye



EXCITING NEWS FOR DLC-SAVA CONSERVATION FUNDING!

BY CHARLIE WELCH, CONSERVATION COORDINATOR

Our DLC SAVA Conservation project received some very uplifting news earlier this year. The Leona M. and Harry B. Helmsley Charitable Trust notified us that our application has been accepted. The Helmsley grant will cover a variety of project expenses ranging from salaries to teacher training activities, hence it will be critical to basic project operation and will allow us to move more rapidly toward our conservation objectives in the SAVA region. It is a very exciting moment for SAVA Conservation, and puts us on the most secure financial footing that we have enjoyed yet – and for the next three years!

The DLC-SAVA Conservation project operates on grants and donations, so this is a particularly important moment in the project's history and development. A heartfelt thanks to the Helmsley Charitable Trust and their staff who, over the two years between first contact and making the award, worked patiently with us to get the submission into peak form. And thanks also to the newest member of the DLC Management Team, grant writer Valorie Sterling Cook, for her part in assembling the submission.

To our faithful donors who have so generously brought the SAVA Conservation project to where we are today, I would also like to offer a heartfelt THANK YOU. Without your loyal support, we would never have achieved the success that demonstrated to Helmsley our ability to put conservation actions on the ground. That said, your support remains crucial for the project to move forward as rapidly as possible to address the environmental needs of Madagascar and the SAVA region. There is much work to do, and the unique forests of the SAVA continue to contract at an alarming rate

JULY 1, 2013-JUNE 30, 2014 ANNUAL FUND DONOR LIST

\$50,000 and above

Leona M and Harry B Helmsley Charitable Trust
Mrs. Kris and Mr. Peter Norvig through the Peter and Kristan Norvig Family Fund

\$20,000-\$49,999

Mr. David Ingram and Mrs. Sarah Ingram through the David B. Ingram Donor Advised Fund
South Carolina Aquarium

\$10,000-\$19,999

Mr. Lowell and Mrs. Eileen Aptman
Mr. John Hufty through the Hufty Foundation
Dr. Clinton and Mrs. Alberta Kelly
Mr. Jack and Denise Kudale
Dr. Anne and Mr. Jeffrey Maggioncalda
Dr. Sara Miller and Dr. David Howell
Ms. Barbara Parkening
Virgin Unite USA Inc.
SeaWorld Busch Gardens Conservation Fund
Nashville Zoo, Inc.
Schwab Charitable Fund

\$5,000-\$9,999

Mr. Brian Daward
Mr. Ivan Stewart
GlobalGiving Foundation Inc.
Mr. Jelle Boersma through the Black Rhinoceros Foundation Inc
Principled Technologies, Inc
Schwab Charitable Fund

\$2,500-\$4,999

Mrs. Julie Cooke
Mrs. Martha and Mr. Paul Gaffney
Mr. Dudley and Mrs. Mari Houghton
Dr. Leslie and Mr. Bruce Metge
Dr. Horst Meyer
Ms. Joanna and Mr. Robert Sturm
Unidentified Donors
Seneca Park Zoo Society
Terra Incognita Ecotours
Mrs. Alexandra and Mr. William Anlyan through the Alex Donor Advised Fund

\$1,000-\$2,499

Mrs. Ki Abel and Dr. Dean Miner
Mr. Michael Acciani
Dr. Kathryn Andolsek and Dr. Don Bradley
Mr. Peter Anspach
Ms. Margaret Babb
Ms. Barbara Baker
Dr. Ron and Mrs. Ronna Banks
Ms. Jane Barthelme
Mr. Karl and Mrs. Suzanne Bates
Dr. Ruby Benjamin
Mr. William and Mrs. Lynn Belmont
Mrs. Eryn Ament and Mr. Michael Bingle
Mr. John Boesch
Dr. Preston and Mrs. Sharon Boggess
Ms. Elizabeth Boskey
Mr. Laurence and Mrs. L.W.A. Boswell
Mr. Christian Bradeen
Mrs. Trudy and Mr. Jeffrey Burdette
Ms. Freda Cameron
Mr. John Carlson
Mrs. Bonnie and Dr. William Chameides

Dr. Mark Chandler
Dr. Cesar Chavarria and Dr. Mary Moebius
Dr. Allan Chrisman and Ms. Polly Van de Velde
Dr. Robert and Mrs. Mary Kathryn Clark
Ms. Margaret Clegg
Mr. Shawn Concannon
Dr. Russel and Dr. Elisabeth Cook
Ms. Alejandra Dafoe
Dr. Diane Dakin and Mr. Stephen Bray
Mr. Richard and Mrs. Barbara Dannenberg
Dr. Luke Dollar and Dr. Zoe Forward
Ms. Maria Donigan
Mr. Mark Downs
Mr. Daniel and Lee Drake
Ms. Lori Enney
Mrs. Harriette and Mr. J. Lawrence Frank
Mrs. And Mr. Jody Frank
Ms. Jen Franklin
Mrs. Carole and Mr. Norman Frye
Ms. Jennifer Ganser and Mr. Andrew Haracourt
Ms. Barbara Gilroy
Ms. Dorothy Goettler
Mr. Jerry and Mrs. Betsy Goodwin
Mrs. Carollee and Mr. Fred Gunnell
Dr. Gregg Gunnell
Mr. Erik and Gutfeldt and Mrs. Deborah Goldeen
Ms. Jennifer Hanawald
Mr. Edward and Mrs. Dale Harris
Mrs. Nancy Hemmerich
Ms. Audrey Hillyard
Mr. David and Mrs. Emily Hoffner
Mrs. Catherine and Mr. William Holden
Ms. Carol Holman
Mr. James Hubbard
Mrs. Nichole, Mr. Scott and Cain Humphrey
Dr. Marianne Jackson
Ms. Jana Johnson and Ms. Kristen Rosselli
Mrs. Janice and Mr. Paul Kalin
Mr. Charles and Mrs. Ann Katholi
Mr. William and Mrs. Ann Kirkland
Dr. Peter and Mrs. Martha Klopfer
Ms. Patricia Kohler
Mr. Walter Korman and Ms. Veronica Lujan
Ms. Linda Kromer
Mr. Gregory Lewis
Ms. Sophia Liang
Mr. J. David Luce
Mr. David MacMillan and Ms. Rollande Krandall
Mrs. Virginia Martin
Mr. John Moore
Ms. Lori Motherwell
Ms. Michelle Murphy
Ms. Cynthia Mynatt
Mr. William Nifong
Ms. Michelle Nowlin
Mrs. Nancy and Mr. Olan Nugent
Mrs. Amy Orringer
Dr. George and Mrs. Peg Pearsall
Mr. Greg Pelton
Ms. Debbie Perez
Ms. Donna Pinto
Mrs. Judith and Mr. Charles Pitman

Ms. Clarice Prange
Mrs. Nancy Ranney and Dean David Levi
Ms. Katy Reynolds
Mrs. Jeannette Rinehart
Mr. Don and Mrs. Guerry Russell
Mr. Fabio and Mrs. Cristina Sartori
Mrs. Sabina Sassoli
Ms. Jean Schaffert
Mr. Edward Scott
Ms. Karen and Mr. Charles Sheffield
Ms. Carrie Shepard
Dr. Rose Smiley and Mr. David Raderman
Dr. John Staddon
Mr. John and Mrs. Emily Stout
Mr. Mark and Mrs. Megan Swain
Dr. Richard and Mrs. Amanda Tempel
Mr. Keith and Mrs. Jeannette Thackrey
Ms. Barbara and Mr. Stephen Tomasovic
Ms. Lynne Venart
Mr. John Walker
Dr. Alan Walker and Mrs. Patty Shipman
Mr. Daniel Watson and Ms. Brenda Hemphill Stone
Mr. Brian Weisner
Mrs. Jane Welch
Mr. Tad Wiczorek
Mr. Michael Wilkins and Mrs. Sheila Duignan
Mrs. Vickie and Dr. Hunt Willard
Mr. George Williams
Mrs. Jane and Mr. James Wilson
Ms. Joan Wilson
Dr. Amol Yajnik and Mrs. Karen D. Kariv
Dr. Anne Yoder
Mr. Harold and Mrs. Sharon Yoh
Mrs. Suzanne and Mr. Jeffrey Yoh
Mr. Atis and Mr. Paul Zikmanis
Dr. Howard Clark and Mrs. Julia Clark through the Rete Mirabile Fund
Nosh Eclectic Foodstuffs
Fullsteam Brewery
Dr. Allen Roses through the Blue Wine Group Charitable Fund
Kirkland & Ellis LLP
Mr. Christopher Sarnoswki and Dr. Janet Novak through the Sarnowski/Novak Fund

\$500-\$999

Apple
Endurance Magazine
Fidelity Charitable Gift Fund
Rise Biscuits Donuts LLC

\$250-\$499

American Endowment Foundation
Apache Corporation
GMR Marketing LLC
Mr. Hans and Mrs. Jen Hartvickson through Ringtail Learning Inc.
Jim & Emily Scheinman Family Philanthropic Fund
Mascoutah Elementary School
VanSant Family Fund

\$100-249

Mr. and Mrs. Daniel Adler
Mr. James Allen

Mrs. Mary and Mr. David Allen
Mrs. Suzanne Almas
Mr. Tim Andeen
Ms. Melissa Anderson
Mr. Mark Anderson
Ms. Tricia Andrews
Mr. Edgar and Mrs. Delores Anspach
Mr. Brian Antoine
Ms. Kim Anway-Anastasia
Mrs. Patricia and Mr. Daniel Bachi
Ms. Amanda Barco
Mrs. Nichol and Mr. Darin Barnett
Ms. Susan Barrett
Ms. Lisa Carley Baxter
Mrs. Stephanie Michelle and Mr. Carl Berger
Ms. Susan Bergstrand
Mr. Tyler and Mrs. Michele Best
Ms. Mary Blanchard
Ms. Dianne Blane
Yani Blate
Mrs. Sarah and Captain Michael Borns
Mr. Joseph Bosch
Mrs. Ursula and Mr. Michael Bowling
Ms. Teri Boyle
Mrs. Blanche Brewer
Ms. Sheree Brinkley
Ms. Eunice Brock
Ms. Pam Brooks
Ms. Meredith Bruns
Mr. Louis Bubala
Mr. Paul Bungert
Ms. Kerry Bunn
Mr. Antony and Mrs. Christina Burt
Mr. Robert Campbell
Mr. Ralph Campbell
Ms. Kathleen Casetta
Mr. Warren and Mrs. Anne Caywood
Dr. Candace Chandler and Mr. Robert Douglas
Mr. Dennis Chen
Dr. Sheila Clancy
Dr. Robert and Mrs. Elizabeth Cole
Ms. Christine Consoli
Ms. Phyllis Cooper
Ms. Tracy Cox and Ms. Vickie Modlin
Ms. Catherine Coyle and Mr. Jeffrey Thomsen
Mrs. Julie Cronin
Mrs. Linda and Mr. Ned Danielely
Dr. Elyse Dankoski
Mr. Dale and Mrs. Barbara Davis
Mr. Justin Deans
Ms. Bonnie DeBold and Dr. Scott Mann
Ms. Jean Denning
Ms. Suzanne Dewitt
Professor Leslie Digby and Mr. Charles Pell
Ms. Judith Ditto
Mr. Scott Durlacher
Mr. Greg and Mrs. Meg Dye
Ms. Amy Entwistle and Ms. Alyson Hyman

Ms. Nancy Epstein
 Mr. Tom Eslick
 Mr. Gregory Fairbrother
 Mr. Douglas Faulkner and Ms. Carolyn Gray
 Ms. Morgan Faunce
 Mr. Robert Feagin
 Professor Michael and Mrs. Susan Fitzgerald
 Ms. Mary and Mr. Martin Fitzpatrick
 Ms. Carole Franco
 Mrs. Kristen and Mr. Scott Franklin
 Mrs. Virginia and Mr. Frank French
 Mr. James Garbutt
 Mr. Michael Gentile
 Mr. Kieran Geoghegan and Ms. Joanne Murray
 Mrs. Joan and Mr. Harris George
 Mr. Timothy Gershon
 Ms. Ginny Ghezzo
 Ms. Dana Goettler
 Ms. Anne Goodrich
 Mrs. Catherine and Mr. John Goodwin
 Dr. Claire Gordon
 Mr. Howdy Goudey
 Ms. Marie Grauerholz
 Mr. David Green
 Mrs. Teresa Greenway
 Mr. James and Mrs. Stacey Griffith
 Ms. Jami Grossfield
 Mr. Willaim Gutheim
 Mr. Andrew Guthrie
 Mrs. Marla and Mr. Michael Hagedorn
 Mrs. Norma and Mr. William Hamm
 Mr. John Hanson
 Mr. and Mrs. Charles Harner
 Ms. Lisa Hathaway
 Ms. Anne Hatley
 Mr. Scott Hennes
 Mr. Peter and Mrs. Janet Hessling
 Mrs. Sandra and Mr. John Hill
 Ms. Jennifer Hitchens
 Mr. William and Mrs. Wendy Hoelscher
 Ms. Sarah Holshouser
 Mr. David Houff
 Ms. Margaret Hutaff
 Ms. Tina Hutchison
 Mr. Mike Jepkes
 Ms. Rebecca Johnson
 Ms. Shelley Johnson
 Ms. Nicole Jordan
 Ms. Anne Kelley and Mr. James Gill
 Mr. William Kenety
 Ms. Janet Kiefer
 Ms. Evelyn Kim
 Mr. Alan Kobernat
 Mr. George and Mrs. Rosemary Kolasa
 Ms. Dena Konneker
 Mrs. Deborah and Mr. John Kotecki
 Mr. Robert Kroll and Ms. Susan Jahh
 Mr. Knight Landesman and Ms. Jennifer Pettit
 Ms. Evie Langteau
 Mr. David and Mrs. Sarah Lasater
 Mr. Tyre Lasitter
 Mr. Lane Leckman
 Ms. Kelly Leeman
 Mrs. Linda and Mr. James Lehman
 Ms. Sarah Lesueur
 Mr. Francis Lethem and Ms. Brigitte Abrams
 Mr. Daniel Leuck
 Mr. Richard Lipinski
 Mr. Alex and Mrs. Lindsey Lopez
 Ms. Gabriele Lubach
 Ms. Eva Lydick
 Ms. Amanda Lynch
 Mr. David Maddy
 Ms. Susan and Dr. David Marks
 Mr. Edward and Mrs. Nan Marsh
 Mr. Ian and Mrs. Trudy Mason
 Mr. Rich Mason and Ms. Darryl Weatherhead
 Mrs. Rebecca and Ambassador Jack Matlock
 Dr. Ralph Matthews

Ms. Michelle McClendon
 Ms. Robin McConnell
 Ms. Lucy McMorris
 Mrs. Brandy and Mr. Richard McQuay
 Mr. Raymond Meaney
 Ms. Tammy Meyer
 Ms. Ginger Meyers
 Ms. Elisabeth Miller
 Ms. Janet and Mr. Robert Molinet
 Mr. James and Mrs. Brenda Moorman
 Mrs. Claire Morgenthaler
 Ms. Sherri Morris
 Ms. Nola Moulton
 Ms. Bonnie Myers
 Ms. Cathy Nichols
 Ms. Ann O'Donoghue
 Ms. Mary Ojeda
 Ms. Helen and Mr. Billy Olive
 Mrs. Jennifer and Mr. Eric Olson
 Dr. Walter and Dr. Mildred Padow
 Mr. Frank Parrish
 Mr. Stuart and Mrs. Martha Pattison
 Mr. Abraham Pernicka
 Mr. Marshal Phipps
 Ms. Deborah Porterfield and Dr. Christopher Klipstein
 Mr. David and Mrs. Paige Ratonyi
 Ms. Karla Reed
 Ms. Charlene Reiss
 Mr. Neil Rice
 Ms. Traci Robbins
 Mrs. Alicia and Mr. Juan Rodriguez
 Ms. Bonnie Rogers and Ms. Lara Klein
 Mr. Robert and Mrs. Nancy Rudzki
 Ms. Hannah Salvatore
 Mr. Matt Saternus
 Ms. Gretchen Schuessler
 Ms. Pauline Schwarz
 Ms. Edith Shepherd
 Ms. Rhonda Sherman
 Mrs. Denise Shungu
 Mrs. Nancy and Mr. David Siebens
 Mr. Neil Sigmon and Ms. Mary Ann Lawler
 Ms. Suzanne and Mr. Anoop Singh
 Dr. Anne-Michelle Singleton
 Mrs. Tanya Smith
 Mr. Timothy Smith
 Ms. Kylie Snyder
 Mr. Rodney and Ms. Denise and Ms. McKenna Snyder
 Dr. Brittany Speer
 Ms. Makenna Spiegel
 Ms. Robin Spivey
 Ms. Alexis Steele
 Mrs. Marie Stevens
 Dr. Joy Stevenson and Dr. John Sheets
 Ms. Susan Stillings
 Ms. Lori Sullivan
 Mr. Alan and Mrs. Victoria Templeton
 Mr. Mark and Mrs. Catherine Terry
 Mrs. Debbie and Mr. Ronald Thie
 Ms. Stephanie Thomas
 Dr. Thomas and Diane Todd
 Mrs. Heather Tracy
 Mrs. Judith Waldron
 Ms. Shellene Walker
 Ms. Deborah Weaver
 Mrs. Carol Welsler
 Mr. Tom Wesselman
 Ms. Caryl West
 Ms. Carol Wetmore
 Mrs. Carol Wheeler
 Ms. Priscilla Wieden
 Dr. Cathy and Mr. Frederick Williams
 Ms. Patricia Williams
 Mr. Brian Williams
 Ms. Jennifer Williams-Smith
 Ms. Kathleen Windsor
 Mr. William and Mr.s Rachel Yavinsky
 Dr. Michael Yochelson
 Ms. Patricia Yurick
 Dr. Susan Zarutskie
 Ms. Sandra Zimmer
 Ms. Marion Zirbel
 CG Project Management Resources
 JustGive
 Lemur Media LLC
 Pfizer Foundation

\$0-99
 Mr. Jane Abling
 Mrs. Mercedes Acebal
 Mr. Glenn Adams
 Ms. Dianne Adams
 Ms. Anusha Agarwal
 Mr. Srinath Alapati
 Ms. Claire Albright
 Ms. Dawn Alexander
 Miss Alyssa Alkhowaiter
 Ms. Jacqueline Anderson
 Ms. Martha Anderson
 Ms. Cheryl Anderson
 Ms. Cynthia Appleby
 Mr. Matthew Aronoff
 Mrs. Cristina Artoni
 Ms. Jennifer Atkins
 Ms. Stephanie Austin
 Ms. Andrea Axtell
 Ms. Sandra Ayres
 Ms. Lorette Babwah
 Mr. Terry and Mrs. Holly Badman
 Ms. Erin Bangsboll
 Ms. Dawn Bardon
 Ms. Calla Barei
 Ms. Meredith Barrett
 Ms. Tanya Bartlett
 Mr. Christophe Battista
 Ms. Elizabeth Becker
 Ms. Deanna Befus
 Ms. Karen Beilstein
 Ms. Mary Bell
 Mrs. Clarissa and Mr. Joel Bencan
 Mr. David and Robbie Bent
 Ms. Christine Berni
 Ms. Suzanne Bertin
 Ms. Katherine Bichard
 Mr. Sean Biederman
 Mrs. Gail and Mr. Russell Blackmer
 Ms. Kenidee Blake
 Mrs. Dianne and Mr. Thomas Blakeney
 Ms. Megan Bolash
 Ms. Nina Bollag
 Mrs. Sarah and Dr. Dani Bolognesi
 Mr. David and Mrs. Roxanna Bottjen
 Mrs. Holly Bourne
 Megan Boyle
 Mrs. Jana and Mr. Fergus Bradley
 Mr. Matt Brady
 Ms. Madelyn Brannon
 Mr. Joel Bray
 Ms. Hope Breeze
 Mr. Ben Britton
 Mr. Holger Brix
 Ms. Jennings Brody
 Ms. Antoinette and Mr. Georffrey Brooke
 Dr. Donna Broshek
 Mr. Jason Brown
 Sheryl Bryan
 Ms. Marianne and Dr. Ian Buchannan
 Mr. Steven Burnett
 Ms. Jill Burton
 Mr. Will Butler
 Ms. Jodi Butler
 Mrs. Julie and Dr. Kevin Byrne
 Ms. Alaina Byrne
 Mr. Patrick Cacchio
 Ms. Charlotte Calleja
 Ms. Leslie Cameron
 Ms. Coralie Cannon
 Mr. Todd Carroll
 Ms. Elizabeth Carver
 Dr. Elizabeth Chan
 Ms. Gael and Mr. Smith Chaney
 Mrs. Laura Chesnut
 Ms. Rebecca Christie
 Mrs. Mary Jo Clancy
 Ms. Shannon Clarke
 Mr. Charles Clift
 Mr. David Cohen
 Mr. Jordan Cole
 Ms. Barbara Collins
 Mrs. Victoria Collis
 Mrs. Joan and Mr. A. Read Cone
 Ms. Andrea Coravos
 Mr. Brendan Cove

Kathy Crabtree
 Mr. Ben Crabtree
 Mrs. Margaret Crawford
 Mrs. Kathleen and Mr. Francis Cregan
 Mrs. Catharine Cummer
 Mrs. Rachel and Mr. Jonathan Cummings
 Mr. Thomas and Dylan Curtis
 Mr. John Dailey
 Mr. Kenneth Daniel
 Mrs. Shelly Daniels
 Mr. Lyle Danielson
 Ms. Joanna D'Aquanni
 Ms. Susan Davis
 Ms. Marion De Groff
 Ms. Debra DeFlorio
 Ms. Carlen Demler
 Ms. Doris Demott
 Mr. Daniel Demuth
 Mr. William and Dr. Jeanne Dennler
 Mrs. Lesa and Mr. Thomas DePeal
 Ms. Miriam DesHarnais
 Mr. David Despain
 Ms. Angela Devereaux
 Ms. Laura Dickerson
 Ms. Patti and Mr. George Dill
 Ms. Judith Dillon
 Dr. Martha Dimes
 Mrs. Lisa Dixon
 Mr. Miles Dixon
 Ms. Andrea Dixon
 Ms. Suzanna Dodd
 Ms. Heidi Dodson
 Mrs. Barbara Doerr
 Mr. Sean Dowling
 Ms. Joanne Drake
 Ms. Laurel Drobits
 Mr. Philip Duckworth
 Ms. April Dudash
 Ms. Heather Duhart
 Ms. Deborah Dunn
 Ms. Carol Dye
 Mrs. Angela and Mr. Sam Eberts
 Mr. Richard Echternach
 Ms. Marcia Edgar
 Ms. Erin Ehmke and Mr. Jim Lord
 Ms. Helena Ellis
 Ms. Judith Elson
 Mr. Herb and Betsy Englishman
 Ms. Patricia Esperon
 Ms. Helen and Mr. Arthur Evans
 Ms. Sheena Faherty
 Mr. Robert Farmer
 Mr. and Mrs. William Farner
 Ms. Marissa Farrell
 Ms. Margaret Feaster
 Ms. Judith and Mr. Ed Feldstein
 Dr. Elias Filho
 Dr. Cynthia Fincher
 Ms. Stephanie Finn and Mr. Yogesh Muthuswamy
 Mr. Paul Fischer
 Ms. Anke Fischer-Kattner
 Ms. Emma Flores
 Ms. Tricia Foo-Ying
 Mr. Daniel Forsha
 Mr. and Mrs. Max Foster
 Ms. Faulkner Fox
 Ms. Stephanie Foye and Mr. Charles Schrank
 Ms. Marlene Frank
 Shelley Freeland
 Mr. Joel and Mrs. Carole Furr
 Ms. Lisa Gaines
 Ms. Jordan Gatcomb
 Ms. Bailey Gatens
 Mrs. Jenna Gengler
 Mr. Alan Ghezzo
 Ms. Deborah Gibbs
 Mr. Russell and Ms. Kyoto Gluck
 Ms. Deborah Godwin
 Ms. Andrea Goehrs
 Ms. Beverly Goodrich
 Mrs. Artura Goods Stolpe
 Mr. Scott Grady
 Ms. Lauren Graham

DFP REPORT

BY GREGG GUNNELL, DIRECTOR DFP



ROADCUT QUARRY SUMATRA

Paleontologists live for the summer because it brings with it field work – the chance to get out from behind a desk and go off to some far-flung place to look for fossils. While it sounds idyllic in an Indiana Jones sort of way, the truth is the work is often very difficult and anything but glamorous. For the kinds of fossils we seek here at DFP (vertebrates, preferably mammals), the places we need to go to find them are seldom near at hand and the environments are seldom hospitable so patience and fortitude come in handy during a field season.

Such was the case this past August when, with the generous support of the National Geographic Society and the Ann and Gordon Getty Foundation, DFP Director Gregg Gunnell along with Duke Evolutionary Anthropologist Doug Boyer travelled to Indonesia in search of fossil vertebrates. The Duke contingent was joined by colleagues from the University of Iowa, Penn State University, the University of Florida, and the University of Alberta. We all converged on Jakarta in early August where we were met by colleagues from the Institute of Technology in Bandung (Java) to complete our field team.

Our first target was the Sawahlunto Formation in the Barisan Mountains in west-central Sumatra. We flew from Jakarta to Padang and then drove four hours into the interior of Sumatra to a field area we had visited three times before. Sumatra is a rugged island of volcanoes and low mountains that are covered by forests and rice paddies. Finding places where rocks stick out of the ground can be challenging but having been there before we returned to places that we knew. We spent 11 days excavating two sites, one along a road cut and another in a local coal mine. The rocks in the coal mine produced spectacular fossil plants including well preserved whole leaves. At the road cut site we quarried at the very base of the Sawahlunto Formation and discovered a treasure trove of fossil vertebrates

including mammals, turtles, crocodiles, fish and amphibians. All told we collected 137 individual vertebrate specimens which have been brought back to Duke for further study. The fossil plants are being shipped to Penn State where they will be studied by our paleobotanist colleague Dr. Peter Wilf.

After our successful work in Sumatra we set off for a new, unexplored area in Kalimantan (Borneo) in hopes of finding vertebrates in the Tanjung Formation. We flew to Banjarmasin in southern Kalimantan and from there drove four hours to a vast coal mine where the Wahana Baratama Mining Company hosted us. They provided great (air conditioned) accommodations, great food and two four-wheel drive vehicles for our use. We spent four days exploring the mine and the Tanjung Formation looking for vertebrates. Kalimantan (at least the southern part) is vastly different from Sumatra being much flatter and MUCH hotter making the work very difficult. In the end we discovered another series of good plant localities and some pieces of vertebrate bone (including a fish skull) giving us hope for future work there. Also in the Wahana mine we discovered an extensive surface covered with trace fossils (mostly burrows, insect tracks and bird footprints) – this trace fossil assemblage was fully documented in the field and will be studied in detail by Dr. John-Paul Zonneveld, our colleague from the University of Alberta. We plan to return to Kalimantan in 2016 and pick up where we left off. We believe that persistence and a little luck will produce better results next time.

VOLUNTEERS

Angela Barr
Rebecca Newton
Maria Pia Rodriguez
Nicole Freitas
Joel McMath
Dhilati Oza
Tia Bevier
Jana Bradley
Soren George-Nichol
Morgan McCafferty
Michelle Stiles
Elizabeth Wiley
Arthur Juliano
Charlise Morgan
Matthew O'Neill
Bobbi Bell
Cody Cooper
Christopher McRee
Kathy Windsor
Chiara Polack
Sara Shamaskin
Jacob Baldwin
Melissa Chieffe
Cody Crenshaw
Ethan Doherty
Madelynn Dudas
Daniel Hertzberg
Katrina Hillhouse
Jason Maher
Rachel Manchester
Laura Mayo
Ryan Siebens
Rachel Slahetka
Madison Stanley
Grant Thurston
Emma Wellbaum
Lydia Campbell
Caleb Caton
Angela Neilans
Cassandra Backman
Madison Bilthuis
Sarah Driscoll
Thomas Dvergsten
Simone Godwin
Hannah Grand
Lauren Hagedorn
Stephanie Hnidka
Danielle Jones
Katherine Jones
Abby Kepley
Michelle Reed
Lilah Sciaky
Jamie So
Gabrielle Wilson
Kimaya Guthrie
Morgan O'Neal
Moiria Pelton
Hannah Schanzer
Tate Sennett
Tyne Tyson
Jordan Adcock
Melissa Ballantyne
Angela Barr
Heather Bell
Jennifer Bethke

Samrath Bhattacharya
Nutishia Blake
Ginny Bradley
Tyler Bray
Lena Brown
Christina Burt
Julie Byrne
Alexis Cacchione
Mary Elyn Cacchione
Monica Chen
Laura Chesnut
Melissa Chieffe
Jordan Cole
Bill Cramer
Vanessa Cruzpagan
Angela Curtin
Dalia Dahir
Elyse Dankoski
Khushboo Dass
Mark Delves
April Dube
Tim Duett
Matthew Dusch
Chandler Elliott
Megan Elwing
Elijah Gaspard
Kylie Grady
Thomas Griffin
Lauren Hagedorn
Emily Hardgrove
Jody Harper
Lisa Hathaway
Delaney Hay
Tatiana Henry
Elizabeth Hyde
Ali Iyooob
Frances Jones
Catherine (cackie) Joyner
Elizabeth Klinck
Kimberly Klinger
Ben Krebs
Whitney Lamb
Kellie Levine
James Loder
Carol Lolley Harris
Jordan Lucore
D'yana Mack
Kassandra Martinez
Alex Mason
Hannah Maud
Erin McConnell
Matthew McConnell
Hannah McCormick
Melissa McLaughlin
Sheima Mehrizi
Rebecca Newton
Holly Noel
Andrew Odriscoll
Janet Page
Sara Perrin
Jacqueline Pfeiffer
Laura Radford
Stacy Ramsey
Felicia Regan
Sheena Riddick

Robert Riesen
Jessica Riker
Maycee Robinson
Emily Rodrigo
Anne Rosenberg
Kayla Seltzer
Rhonda Sherman
David Shore
Rachel Silver
Allison Stitt
Natalie Strausborger
Laura Strickland
Alissa Tepedino
Michal Tetreault
Melinda Thomas
Hillary Tupper
Jennifer Vanbuuren
Katherine Vayda
Matthew Vogler
Tezin Walji
Jennifer Walker
Kay Welser
Macaulay Whiting
Lorie Williams
Anna Elyse Yarbrough
Rachel Blake
Todd Carroll
Mark Chandler
Betsy Englishman
Herb Englishman
Susan Fitzgerald
Jessica Geiss
Carly Gelfond
Savannah Gupton
Eleanor Hanna
Scott Hennes
Carol Holman
Allison Jaillet
Amber Kenney
George Kolasa
Nick Labriola
Gwynne Macintyre
Alisa Mappes
Alanna Marron
Patricia Massard
Rowan Murray
Jennifer Nunez
Michael Umphrey
Anisha Watwe
Spencer Ziegler
Marissa Acciani
Vicki Willard

DONOR PROFILE ATIS AND PAUL ZIKMANIS

Atis and Paul are longtime supporters of the Lemur Center. They recently spent an entire day here, participating in our "Keeper for the Day" program. Afterwards we sent them a list of five questions asking why they support the Center, but they were too excited about their Keeper for the Day experiences (recounted below) to answer all the questions!

Why we love lemurs and support the DLC.....

We love lemurs because they are so fun and so beautiful. Just look into their curious, playful eyes and you can't help but love them. We support the DLC for two reasons. First, to say thanks to the staff who do the hard work of caring for the lemurs. Second, to lead by example in hoping many others will help sustain and preserve forever these natural treasures.

We have been supporting the DLC for more than 11 years. Each year we have adopted a different species of lemur. As long time supporters we made a special trip from California as we wanted to experience all the DLC had to offer!

We started our day at 6:15am prepping meals for the lemurs with Julie and Mack, two very fun lemur technicians! We learned that each lemur receives a unique diet and learned how to read all the diet prep boards.

We then attended the daily technician meeting to learn what each technician was responsible for each day and to hear about the priorities for the day. After the meeting, we had breakfast with Charlie Welch and Andrea Katz. They are responsible for the conservation work in Madagascar and managing the DLC colony of lemurs.

After breakfast we were off to hang out with the lemurs in the forest while they ate the food we prepared. Steve, the keeper introduced to each of the lemurs and we were able to watch their personalities on display during feeding and play time.

We were treated to lunch with the DLC education department and Dr. Cathy Williams, the senior vet and were able to ask all about her daily work and her exciting adventures in Madagascar saving wild populations of lemurs.

After lunch we changed into scrubs and made aye-aye gruel and had the glamorous job of cleaning out

enclosures! This gave us close up time with the enclosure residents! Paul had his phone stolen by a red ruffed lemur and Atis had his bald head tapped by an Aye-Aye!

After 11 years of support, we were able to spend 11 hours at the DLC meeting nearly the entire staff and, of course – the lemurs! The lemurs did not disappoint! We had an amazing time at the DLC! This is one day in our lives that we will never forget!



Ms. Doris Green
Mrs. Rebecca Green
Mrs. Judith Greene
Ms. Linnie Greene
Ms. Chase Gregory
Ms. Genevieve Griffin
Ms. Diane Groff
Mrs. Eunice and Dr. Herman Grossman
Ms. Bronwyn Gruet
Ms. Darlene Hadsel
Carolyn Hall
Mrs. Joanna and Mr. Stuart Holloway
The Reverend Patrick Hamrick
Ms. Patti Hanline
Ms. Madison Harman
Ms. Natina Harris
Ms. Sandra Hart
Mrs. Lynne and Mr. Gary Hartshorn
Mr. Michael Hauser
Ms. Suzanne Havens and Mr. Kevin Cohan
Ms. Rebecca Hawkins
Mr. Brenton Head
Mr. Matthew Hecht
Ms. Deborah Heller
Mr. Stuart Henderson
Mr. John Henry
Ms. Eleanor Herdon
Dr. Marie and Mr. Melvin Hertzig
Ms. Amy Hibel
Mr. Joshua Hill
Mr. Nathan Hillery
Miss Nancy Hines
Mrs. Mary Hines
Ms. Melanie Hoelter
Mr. Hans-ewald Hohmeier
Ms. Stephanie Holmgren
Ms. Sarah Holsapple
Mr. Nick Hook
Ms. Allison Hoots
Ms. Hannah Jo Hopkins
Ms. Judy Howe
Ms. Lois Howlett
Mr. Zachariah Hubbell
Mrs. Judith and Mr. Donald Hubbs
Ms. Nancy Hummel
Mr. Eric Huskey
Alex Hutchinson
Ms. Betty Irvin
Mrs. Alice and Dr. Tom Ivester
Ms. Heather Jahnes
Ms. Allison Jaillet
Mr. Christophe Jauffret
Mr. Richard and Ms. Debra Jenner
Miss Margaret Jones
Mr. David Jones
Mr. Nathaniel and Mr. Elizabeth Justice
Ms. Jennifer Justice
Mr. Martin Kagan
Ms. Leah Kaiser
Mr. Arif Kamal
Mrs. Kathleen Karamanian
Ms. Andrea Katz and Mr. Charles Welch
Ms. Serena Kaylor
Mr. Zeb Kaylor
Ms. Britt Keith
Ms. Stacey Kirkbride
Professor Andrea Knight
Ms. Kara Kolls
Ms. Patricia Krieg
Mrs. Lydia and Mr. David Kwee
Mrs. Lydia Kwee
Mr. Revere La Noue
Ms. Candace Lacy
Ms. Maria Lanni
Rylan Larsen
Ms. Susan Launiau
Ms. Catherine Lawrence-Axland
Ms. Erin Lawrimore
Mr. Alex Lawson
Ms. Patricia Lea
Ms. Carmel Lee

Mr. Joseph Lemeris
Mr. and Mrs. Mark Lieberman
Mr. Christopher Limer
Dr. Deborah Linder
Mr. Philip and Mrs. Sara Livingston
Mr. Brendan Long
Dr. Elizabeth and Mr. Eric Lonsdorf
Mr. Jonathan Losos
Ms. Nan and Mr. Scott Lujan
Mr. Scott Lujan
Ms. Brenda Lyons
Ms. Juliana Ma
Mr. Adam Macklin
Mr. Lee Mallatratt
Ms. Allison Manchester
Dr. Marcia Mandel
Mrs. Constance Manos-Martin
Mrs. Elaine Marcus
Ms. Shana Margolis
Mr. Richard Martin
Mrs. Teresa and Mr. Mark Martin
Mr. Jeffrey Martin
Ms. Angela Martin
Ms. Yessenia Martinez
Ms. Pat Massard
Ms. Amy May
Mrs. Elizabeth and Mr. Thomas Maybank
Mr. Michael Mazzeo
Ms. Morgan McCafferty
Ms. Felicia McCamy
Ms. Erin McClanahan
Ms. Fiona McCrossin
Ms. Sara McDaniel
Ms. Kara McGee
Mr. Brian and Mrs. Sarah McGiverin
Mrs. Lori and Jeanie McGuire
Ms. Amanda McGuire
Ms. Kelly and Mr. David McIntosh
Mr. Daryl McNabb
Ms. Sarah and Mr. Don Mead
Mr. Derek Merleaux
Ms. Gale Meyer
Mr. Ronald Miller
Mrs. Leslie and Dr. Eugene Mindel
Ms. Stephanie Mitchell
Ms. Elizabeth Moore
Ms. Michelle Moore
Mr. Erik Moore
Ms. Ashleigh and Mr. Peter Morgan
Ms. Ashleigh Morgan
Ms. Kelly Morgan
Ms. Blyth Morrell
Ms. Rosemary Mosco
Mrs. Colleen and Mr. Matthew Mothander
Ms. Susanne Moulton
Ms. Faye Moussa
Ms. Erin Moxam
Ms. Linn Muhr
Ms. Cheryl Mullin
Mr. Randall Munroe
Mr. Christopher Muoio
Ms. Danielle Muoio
Ms. Keisha Myrick
Ms. Emily Myron
Mr. Jason Nassof
Ms. Roquelle Newby
Mr. Tri Nguzen
Ms. Lori Nichols
Ms. Pamela and Dr. William Norcross
Ms. Karen Norris
Mr. Ernest Novak
Ms. Patricia Odom
Ms. Andrew O'Driscoll
Mr. Chris Olsen
Ms. Jennifer Ostrom
Ms. Jessica Owen
Ms. Marcie Pachino
Ms. Paula Pariseau
Ms. Tamara Pearce and Mr. Bruce Leonard
Ms. Joan Peck

Mr. Craig Peckham and Ms. Elizabeth Wyatt-Peckham
Ms. Laura Pedersen
Mr. Simon Pedisich
Mr. Ian Peikon
Mr. Michael Penn
Mr. Jonathan Perry
Ms. Barbra Peterson
Ms. Stacy Peterson
Mr. Bryan Pezeshki
Mrs. Jennifer and Mr. Daniel Popham
Ms. Emily Poplawski
Ms. Rebecca and Ms. Nancy Porter
Mr. Alan Potts
Ms. Dana Powers
Dr. Alan and Mrs. Nancy Proia
Ms. Elizabeth Pultorak
Mr. Dimitri Putilin
Dr.'s Debra and Eric Putterman
Mr. John Raderman
Mr. Mark Ramer
Dr. Richard Randall
Ms. Carola Rayburn
Ms. Camille Rebelo
Mr. Douglas and Mrs. Vinca Renner
Ms. Dana Reyman
Ms. Sandra Reynolds
Ms. Elise Rice
Mrs. Alice and Mr. James Richmond
Mr. Nathaniel Ries
Mrs. Joan Robbins
Mr. Andrew Robbins Pollack
Ms. Jennifer Rocke
Mrs. Bonnie Rogers
Mr. Franklin Rogers
Mr. Alfonso Romero
Ms. Julie Rosato
Ms. Carma-Linda Routten
Ms. Vanessa Rumaz
Ms. Stacy Rusak
Mr. John Martin Rust
Mr. Ernest Sadashige
Ms. Tanya Sakamoto
Ms. Melissa Saltzman
Mrs. Jennifer and Mr. Ben Sanford
Ms. Margaret Saunders
Mr. Matthew Savopoulos
Ms. Deborah Sawyer
Ms. Jordan Schermerhorn
Ms. Stephanie Schmidt
Ms. Leslie Schneider
Ms. Tanya Schreiber
Ms. Katya Schultz and Mr. George Chase
Mrs. Cindy Scott
Ms. Suzanne Semmes
The Reverend Donald and Mrs. Eleanor Settle
Mr. Tod Severance
Ms. Erin Seybold
Ms. Rhonda Sheagley
Mr. and Mrs. James Shelton
Ms. Kathy Shimata
Dr. Nancy and Mr. Wilbert Short
Ms. Mary Sikes
Ms. Lessley and Ms. Kathy Silberberg
Ms. Cheryl Simpson
Dr. Mark Sinning
Mr. Walter and Mrs. Elizabeth Sinnott-Armstrong
Mr. Brian Skerratt
Ms. Carolyn Sloss
Mrs. Beth and Mr. William Smith
Ms. Celia Snavely and Mr. Richard Watt
Mr. Dan Snyder
Ms. Paula Soderlund
Mr. Joseph Soldati
Dr. Richard and Mrs. Sarah Sommers
Ms. Stephanie Sorosiak
Mr. Brett Spiegel
Dr. Justin Stachnik
Mr. Jimmy Stanley
Ms. Ruth Stanton
Mr. Benjamin Steadman
Ms. Kirsten Steele
Mrs. Barbara Strohbehn and Mr. Fred Smith

Mr. and Mrs. Gary Stutts
Ms. Julia Suggs
Ms. Gillian Suss
Mr. Charles Swan
Ms. Caitlin Taaffe
Mrs. Rebecca and Mr. Thomas Talbott
Ms. Emily Tancredi-Brice Agbenyega
Mr. Rick Taylor
Ms. Grace Taylor
Mrs. Victoria and Mr. Robert Telford
Ms. Katharine Thompson
Ms. Catherine Thompson
Mr. Vidar Thorsteinsson
Mr. Michael Tong and Ms. Tina Mullet
Ms. Valeria Tosetto
Ms. Mary Tulenko
Dr. Ann Tunstall
Ms. Debra Tyson
Mr. Robert and Ms. Nancy Unferth
Ms. Deborah Vacca
Mrs. Jennifer Van Anda
Mr. Mark and Mrs. Mary Van Name
Ms. Tonya VanDeinse
Ms. Nikki Vangsnes
Ms. Amy Vickers-Smith
Ms. Kristina Victoreen
Ms. Rebecca Vidra
Ms. Carol Voirin
Ms. Susan Voskuil
Mrs. Marion and Mr. Robert Wade
Mr. Jason and Mrs. Brooke Wagner
Ms. Judith Wagner
Ms. Christine Wagner-Hecht
Mrs. Margaret and Dr. Geoffrey Wainwright
Ms. Sarah Walker
Ms. Sarah Watson
Ms. Linda Weaver
Mrs. Brenda and Mr. William Webber
Ms. Mary Weber
Mr. Norman Weinstein
Ms. Emma Wellbaum
Ms. Kay Welser
Ms. Lauren Wessel
Ms. Sarah Wessell and Mr. John Bley
Mr. Gregory Westby
Mr. Simon and Ms. Danielle Williams
Ms. Loretta Williams
Ms. Loretta Williams
Katherine Williams
Mr. Brad Wilson
Ms. Pamela Witherspoon
Ms. Jennifer Wojcik
Mr. John Wolcott
Dr. Robert Wolpert
Ms. Anastasia Wong
Mr. William and Mrs. Marie Woodbridge
Ms. Kendyl Worrell
Mr. John Yi
Ms. Jeanne Yocum
Mrs. Sandra and Mr. Aaron York
Mr. Kenneth and Kathryn Young
Ms. Ginger Young
Ammet Zaveri
Ms. Coralie Zegre
Dr. Elaine Zeman
Mr. Ernest Zitser
Mrs. Linda Zoffer
Mr. John Zukowski
Alivia's Durham Bistro
Intuit Foundation
Bank of America Foundation
BMO Harris Bank
Bull City Running Co.
Elite Performance Chiropractic
GE Foundation
Gen Financial Management, Inc.
North Carolina Piedmont AAZK
Parker & Otis
Q Shack Corporation
Sandwich. LLC
Sugarland Raleigh LLC
Trosa
Unity Services, LLC
Bright Horse Art Inc.
C A K Publishing
Law offices of Felipe Castillo
Illustrate To Educate
Community Foundation of Middle Tennessee

TOTAL VOLUNTEER HOURS:
13,256.97

DONOR PROFILE DANA GOETTLER

1. How did you discover the DLC?

I fell in love with lemurs at a very early age, and wanted to be sure that my limited donation was used well by people who love lemurs as much as I do. A friend told me about the DLC, and it seemed like the obvious choice; a visit confirmed that.

2. How long have you been supporting the DLC?

The day after I found out it exists! I have been supporting the DLC since age eight (I'm twelve now), visiting every year (from Connecticut!) and adopting a lemur or two. I save every dollar I get to donate, and continue to request donations on my birthdays.

3. Why is it important to you to support to the DLC?

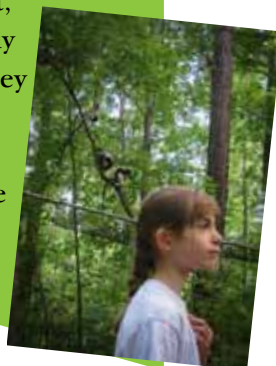
I love lemurs. As I learned more about the world's most endangered mammals, I realized that I needed to take on more of an active conservationist role. There can never be enough attention, but I'll do my part and encourage others to do the same. As far as I can tell, the DLC is the most effective organization for protecting lemurs (and the staff is great!), making it the clear choice.

4. What do you do outside of the DLC?

I'm a lemur-loving seventh grader, independently studying primate biology and conservation; I can't wait to continue my studies at Duke University! I enjoy wandering through the woods in my free time, climbing trees and spying on squirrels and the like.

5. Favorite Species:

My favorite species of lemur (or any animal) is a diademed sifaka. They're intelligent, quirky, pretty, athletic, and remarkably understated; too few people know they exist. I really wanted to meet Romeo! I love every lemur though, even the ones that are extinct or have yet to be discovered.



JULY 1, 2013- JUNE 30, 2014 LOCAL SPONSORS & IN-KIND GIVING

Local Sponsors

Fullsteam Brewery
Nosh
Rise
Bull City Running
Posh the Salon
Qshack
Parker and Otis
Sugarland
Sandwich
Twig
Marbles Kids Museum and the Wells Fargo IMAX
NC Piedmont AAZK
Duke Stores
Enzo's Pizza
Durham Coca-Cola
Whole Foods
Endurance Magazine
TROSA
Carolina Hurricanes
Medecasse Chocolate
Elite Performance Chiropractic

In Kind Giving

Mr. Herb and Betsy Englishman
Dr. Sara Miller and Dr. David Howell
Mrs. Janice Kalin
Ms. Sarah Wessell
Ms. Jennifer Ganser and Mr. Andrew Haracourt
Ms. Lucy McMorris
Mr. Don and Mrs. Guerry Russell
The Duke School



MONGOOSE LEMURS

GIFTS IN HONOR OF & IN MEMORY OF

Gifts in honor of:

Dr. Kathryn Andolsek and Dr. Don Bradley in honor of Kendall Bradley
Ms. Elizabeth Becker in honor of Jill Thomson
Dr. Lynne and Mr. William Bermont in honor of Elizabeth Wise
Mrs. Eryn Ament Bingle and Mr. Michael James Bingle in honor of Class of 1994's 20th reunion
Mrs. Elizabeth and Dr. Robert Cole in honor of Jordan Cole
Dr. Diane Dakin and Mr. Stephen Bray in honor of Joel Bray
Ms. Miriam DesHarnais in honor of Susan DesHarnais
Ms. Angela Devereaux in honor of Elizabeth Devereaux
Ms. Joanna Drake in honor of Jennie Faries
Ms. Sheena Lee Faherty in honor of Sharon Faherty
Ms. Tricia Foo-Ying in honor of Joe Willemsen
Ms. Jen M. Franklin in honor of Pat Hughes
Mr. Andrew Neil Guthrie in honor of Ian Guthrie
Ms. Lisa Hathaway in honor of Devon Hathaway
Mr. Michael Hauser in honor of Sharon Hauser
Dr. David Howell and Dr. Sara Miller in honor of Gladys Howell
Mr. James Hubbard in honor of Sherry Hubbard
Mr. Donald and Mrs. Judith Hubbs in honor of Lynda Hubbs
Mr. Eric Matthew Huskey in honor of Annabel and Grant
Mr. Alex Hutchinson in honor of Cory Chow
Mr. Mike Jepkes in honor of Jessica Barnowski-Jepkes
Ms. Sophia Liang in honor of Ms. Polly Van de Velde
Mr. Jonathan B. Losos in honor of Hannah Schanzer
Mr. David Maddy in honor of Presley
Ms. Shana Margolis in honor of Laila Margolis
Mr. Daryl J. McNabb in honor of Liam Ehrenberg
Ms. Fiona Morgan in honor of Lemurpalooza event
Ms. Cheryl Mullin in honor of Jessica Katherine Mullin
Ms. Mary Ojeda in honor of Melyssa Ojeda
Mr. Marcie Pachino in honor of Kirsten Agbenyega
Mrs. Lucinda Paris in honor of Julie Byrne
Mr. Frank Parrish in honor of Alexandra Guest
Dr. George W. Pearsall in honor of Margaret Feeney Pearsall
Dr. Debby and Mr. Eric Putterman in honor of Allison Putterman
Dr. Rose Smiley and Mr. David Raderman in honor of mouse lemurs
Mr. Don J. Russell in honor of Guerry Russell
Dr. Anne-Michelle Singleton in honor of Scott L. Schneider
Ms. Celia Snavely in honor of Dr. and Mrs. William C. Crow
Mr. Brett David Spiegel in honor of Marilyn Spiegel
Dr. Justin Stachnik in honor of Holger Brix
Dr. John Staddon in honor of Julie Byrne
Ms. Catherin Thompson in honor of Jeffrey Thomsen
Mr. Barry J. Varela in honor of Lemurpalooza
Ms. Judith A. Wager in honor of Walt Wagner
Ms. Emma Campbell Wellbaum in honor of Karen Campbell
Ms. Priscilla Bernard Wieden in honor of Allison Bryan

-Special thanks to all those who donated flowers for lemurs in honor of their loved ones during Valentine's Day and Mother's day!

Gifts in memory of:

Ms. Maria Donigan in memory of Suzie
Mr. Tom Eslick in memory of Anastasia Kaye Flanagan
Mr. Charles N. Herrick in memory of Meredith Millspaugh
Ms. Sarah Amanda Lesueur in memory of Meredith Millspaugh
Mr. Charles and Mrs. Judith Pitman in memory of Richard Roach
Ms. Freda Cameron in memory of Richard Roach
Mrs. Linda D. Zoffer in memory of Richard Roach
Mr. Tom Wesselman in memory of Tom Herzog

Total individual giving for FY 13-14: 842 donors

MY DATABASE SUPERHERO

BY SARAH ZEHR,
RESEARCH SCIENTIST

The year was 2011, and I had just undertaken a mission to gather together all the raggedy bits of lemur data found skulking around every corner at the DLC in all their varied and ugly forms. I vowed to clean them up and unite them, creating an army of data to be unleashed upon the unsuspecting researchers, educators, and lemur lovers of the world. What I needed was a database! Unfortunately, at the time, this average Jane knew little enough about databases and next to nothing about programming them. I didn't know where to turn.

Suddenly, I walked Database Superhero Richard Roach and his Database Sidekick (and wife) Freda Cameron to save the day! Having spent many years in superhero training at local software company SAS, they deftly worked out the solution to all of my data woes. What evil lurks in the heart of incompatible files, Richard knows. What we needed was a SAS-based analytic database, and soon! Programming faster than a speeding bullet, creating a database more powerful than a locomotive, able to join disparate data formats in a single bound, this incompatibility-fighting duo built the foundation of the DLC database, home to all of the glorious animal data that has recently been released into the world.

But then, as in the stories of so many great superheroes, tragedy struck. In the fall of last year, Richard told me that I would have to stop relying on his superpowers and focus on developing some of my own. With the guidance of his programming legacy, I stepped into the SAS world, creating programs that while not particularly fast, powerful, or streamlined, keep the database going. For you see, I lost my superhero in May. Although he did not survive long enough to see the data he so carefully helped compile furiously streaming out across the internet to the delight of scientists everywhere, I was able to show him the accepted manuscript before he died, so he knew with certainty we had succeeded in our mission. I miss my superhero, and will strive to make him proud by continuing the good fight toward public accessibility of lemur data far, far into the future.



Freda Cameron, Richard Roach
and Dr. Sarah Zehr